



JEEP Cherokee KL

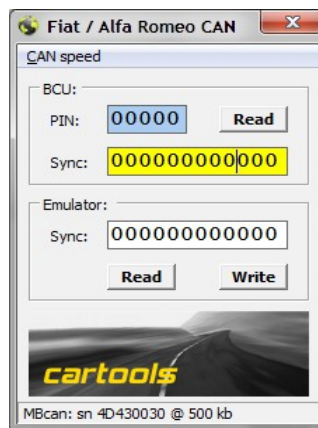
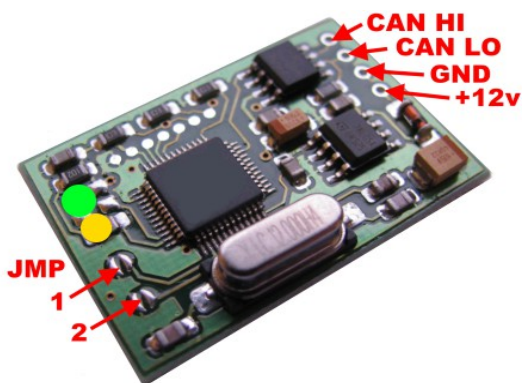
SCL emulator, CAN bus

Purpose:

JEEP Cherokee KL () SCL emulator, CAN. Covered: 2014 and up, FIAT architecture, BCM+RFHUB+SCL (SCL located on CAN-C1). **NOT** Plug&Play, must store SYNC (6 bytes) into emulator (must extract it from SCL or BCM dump). SCL part number: **68145593AD**

Configuration:

Use any CAN logger or MScan (use FIAT configurator software for MScan, connection speed 500kB) to store SYNC. Emulator must be in configuration mode - JMP1 and JMP2 both open.



How to store SYNC using CAN logger:

- Connection speed: 500 kB,
- To request actually stored SYNC send - **770 7 DD 00 00 00 00 00 00**, emulator must respond with **771 7 EE xx xx xx xx xx xx**, where xx are 6 bytes of SYNC...
- To store SYNC into emulator - **770 7 CC xx xx xx xx xx xx**, emulator must respond as previously, with 6 bytes of actual SYNC: **771 7 EE xx xx xx xx xx xx** - response must match the request.

Installation on car:

Place solder joint to short JMP1 and JMP2 (any or both, no matter) to prohibit SYNC updates by accident. Connect emulator directly to CAN-C1 (Powertrain CAN), attach ground wire and permanent power supply (+BAT). It is possible to connect emulator directly to OBD plug (4,5: GND, 6: CAN-HI, 14: CAN-LO, 16: +BAT).

LED on emulator board:

- **ORANGE** or **RED**: SCL is in locked state,
- **GREEN**: SCL is unlocked, correct authorization and unlock request received.
- If both LED's are off, no activity on CAN detected (sleep mode).

