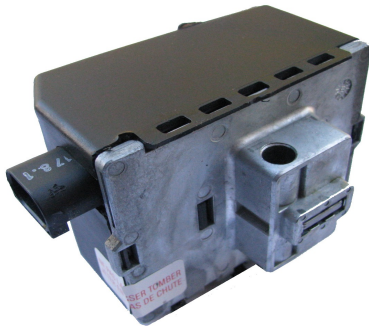


ESL emulator for RENAULT cars



Old type ESL, 250 kB CAN speed:

ESL connector:

- 1 - minus (-)
- 2 - plus (+)
- 3 - can high (H)
- 6 - can low (L)

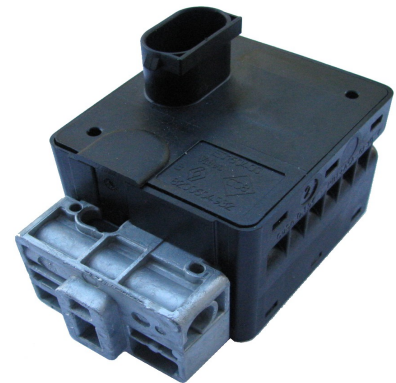
Jumper (or BOTH jumpers) on emulator board: SHORTED

Later ESL, for 500 kB CAN speed:

ESL connector:

- 1 - minus (-)
- 2 - plus (+)
- 3 - can high (H)
- 6 - can low (L)
- 4 - connect to pin2 through 100ohm...1k resistor

Jumper (or BOTH jumpers) on emulator board: OPEN



NEW type ESL (Renault, Nissan), 500 kB CAN speed:

8-pin ESL connector, pins 4 and 5 unused:

- 1 - minus (-)
- 2 - plus (+)
- 3 - can high (H)
- 8 - can low (L)
- 6 - connect to pin2 (plus) through 1kohm resistor

Jumper (or BOTH jumpers) on emulator board: OPEN

Status LEDs:

GREEN: "locked", **YELLOW**: "unlocked"