



ISUZU immo emulator CAN - 1

Siemens immobox 5WY7692, 2007 up

Purpose:

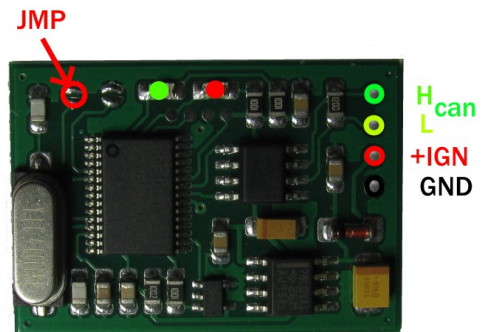
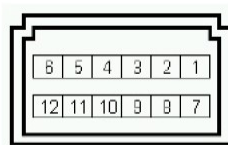
Designed for ECU start authorization. Not plug & play, must store 6-bytes of SYNC using CAN logger or MBcan.

Installation:

Install anywhere where CAN network and IGN ("K1.15") is available. Recommended install is in place of original immobilizer unit to correctly terminate CAN network (120 ohm terminators are originally located inside ECU and IMMO both).

Original immobilizer connector
pinout, used pins:

pin 3: GND
pin 5 : CAN Hi
pin 6 : CAN Lo
pin 9 : +IGN ("k1.15")



Configuration:

- JMP must be open to allow configuration.
- Use CAN logger or MBcan to store necessary SYNC into emulator. Using logger must send frame at 500kB like below where **112233445566** is necessary SYNC:

7FE (8) 00 00 **11 22 33 44 55 66**

- Emulator must respond with ID **7FF** and same 8 data bytes.
- Finally place solder joint (short JMP) to avoid further updates.
- Job done!

For MBcan users:

it is possible to load SYNC from ECU or IMMO dumps directly. Must attach emulator and write some trash (any SYNC) into it to enable file load.



LED on emulator board:

- RED** goes ON at power-up;
- GREEN** goes ON when authorization request received (ECU communicates), although it doesn't mean ECU is authorized - must check ECU live data using diagnostic scanner to be sure.
- Both **RED** and **GREEN** must go off after 2 seconds from startup - immo is active only first 2 seconds after IGN is switched ON.

