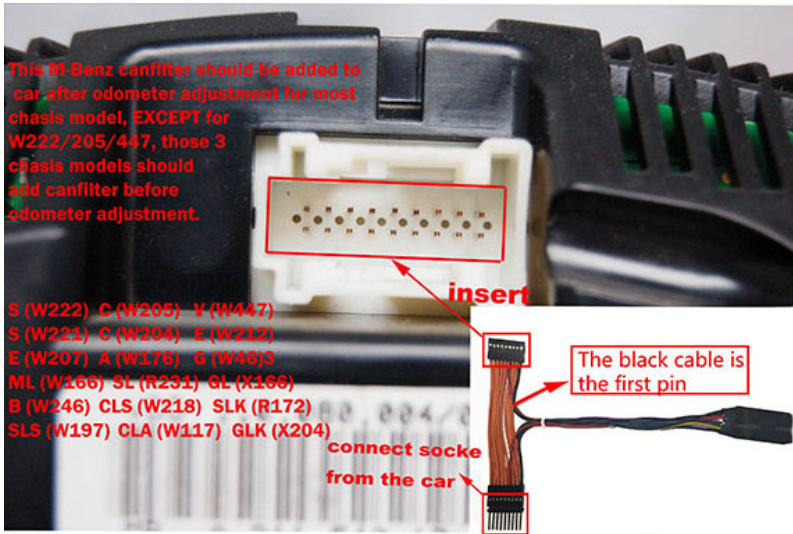


MB CAN Filter 18 in 1 Benz/BMW Universal filter

Applicable vehicle list:

1. Benz 18 types chasis model: S(222), S(221), C(205), C(204), V(W447), E(W212), E(W207), A(W176), G(W463), ML(W166), SL(R231), GL(X166), B(W246), CLS(W218), SLK(R172), SLS(W197), CLA(W117), GLK(X204)
BMW: CAS4/FEM Fxx



2. BMW Model:

BMW 1 series F2X, 3 series F3X, BMW X5 etc., FEM mileage adjustment
 BMW 5 series F10, 7 series F01/02 etc., CAS4 Fxx chassis. (F01, F02, F07, F18, F10, F20, F25, X3 etc., applicable for 9S12 XEP series 5M48H/1N35H).

This filter is universal for multiple car models, small and convenient, easy operate, with stable performance and reliability.

NOTICE!!

New style: 222/205/217

Old style: 166/212/463

CHECK the car model correctly before adjust.

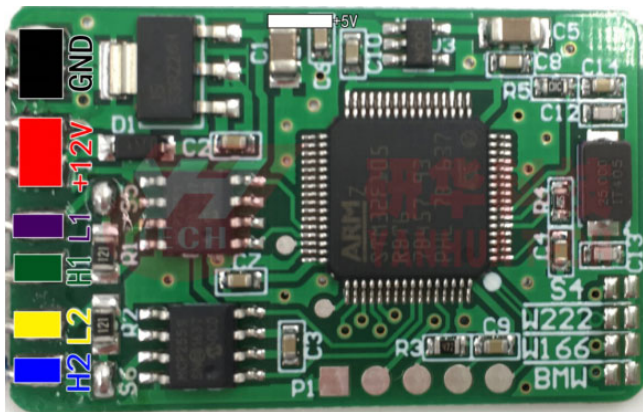
Old style W166 short circuit to GND

New style W222 short circuit to GND

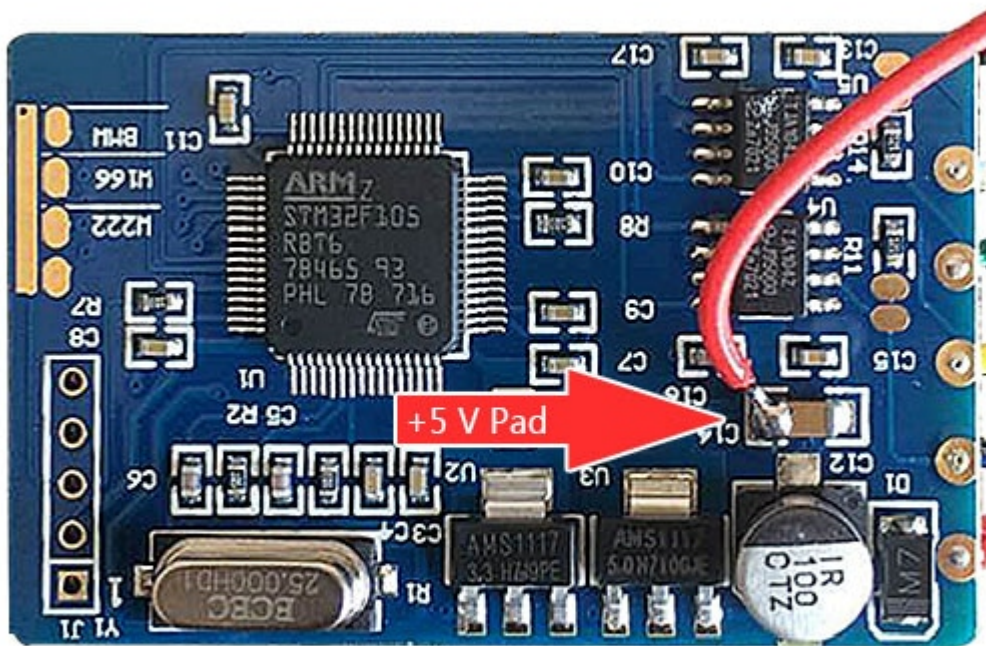
Black wire connect to plug 1

YH Benz / BMW Universal filter --- Diagram for BMW

Below is wiring illustration:



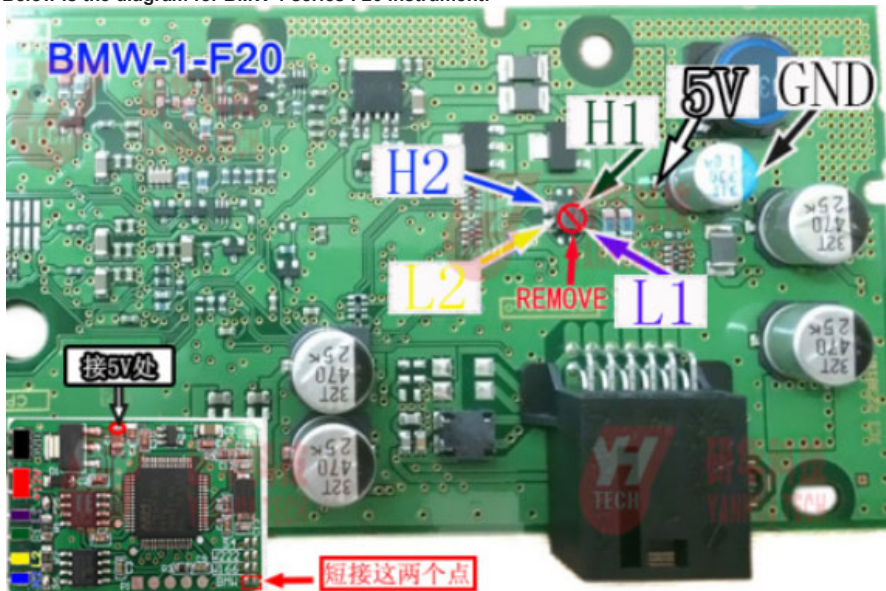
- | | | |
|-------------------------|------------------------|-----------------|
| Black ----- GND | Red ----- +12V | White ----- +5V |
| Purple ----- L1(CAN_L1) | Green ----- H1(CAN_H1) | |
| Yellow ----- L2(CAN_L2) | Blue ----- H2(CAN_H1) | |



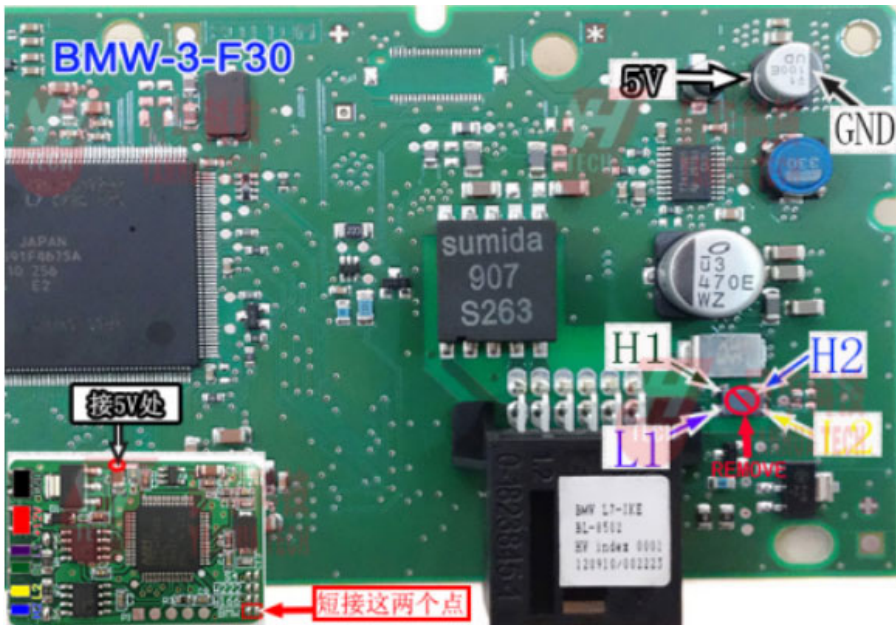
Black ----- GND Red ----- +12V White ----- +5V
 Purple ----- L1(CAN_L1) Green ----- H1(CAN_H1)
 Yellow ----- L2(CAN_L2) Blue ----- H2(CAN_H1)

NOTICE! Please connect the 2 BMW dot together(short circuit) **BEFORE** connect to car!

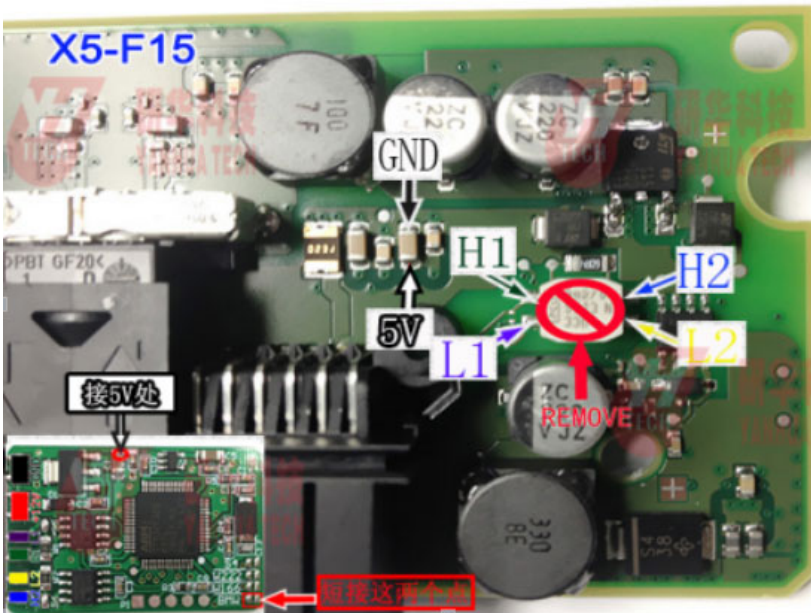
Below is the diagram for BMW 1 series F20 instrument:



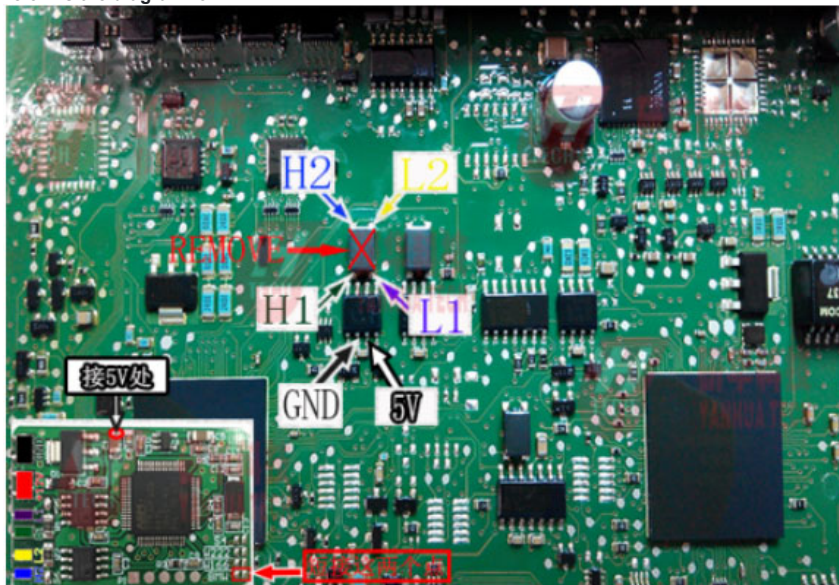
Below is the BMW 3 series F30 instrument:



Below is the diagram for BMW X5 F15 instrument:



Below is the diagram for BMW FEM:



Below is the diagram for BMW CAS4(1L15Y/5M48H/1N35H)

